



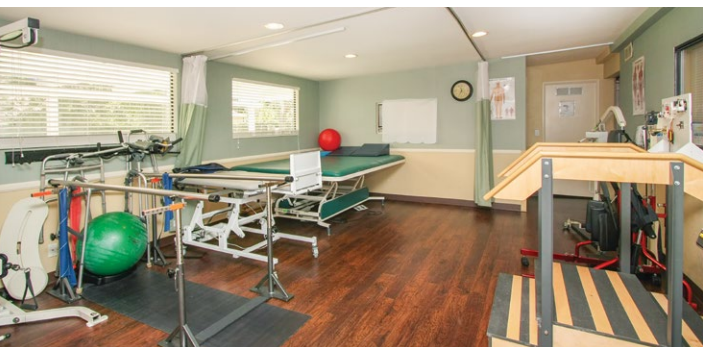
CareMeridian provides a continuum of high-quality, cost-effective post-acute care and rehabilitation options to people of all ages with brain, spinal cord and other life-altering injuries and medically complex illnesses. With program locations throughout the Western United States, CareMeridian offers a distinctive service delivery model, merging an experienced and skilled health care and rehabilitation team with specialized technology in community-based program settings designed to meet the unique needs of those we serve at every stage of their recovery.

CareMeridian is a partner of The MENTOR Network, a national network of local providers serving youth at risk, individuals with intellectual and developmental disabilities and people with brain, spinal cord and other catastrophic illnesses and injuries across the country.



Our Funding Options

At CareMeridian, we strive to provide a higher-quality and lower-cost alternative, working closely with a variety of payors, including private insurance companies and workers' compensation specialists. We participate as an "In Network" provider for most major health plans and payors. Funding options include: HMOs, PPOs, Workers' Compensation, Private Insurance and Private Pay.



**Refer a Patient:
800-852-1256**

www.caremeridian.com

Los Angeles County Locations (San Fernando Valley)

Bermuda
818-366-8389

Laramie
818-882-2903

Oso South
747-224-0446

Oso North
818-739-1776

Texhoma
818-739-3057

Victory
818-704-7616

Wilbur
818-993-1147



**Our San Fernando
Valley Facilities**

www.caremeridian.com

Our Care Team

With an industry leading 1:3 staff-to-patient ratio in our San Fernando Valley facilities, 1:1 therapy and 24/7 care, CareMeridian offers individualized care plans and personalized attention with our Interdisciplinary Treatment Team composed of: physicians; nurses; case managers; social workers; physical, speech, occupational and respiratory therapists; neuropsychological specialists; activities directors; and dieticians.

Our Facilities

With 9 facilities located in **Los Angeles County's San Fernando Valley**, CareMeridian is effectively able to serve patients throughout the region with needs ranging from multiple trauma, fractures, tracheostomy care, wound care, and patients with spinal cord injuries to severe traumatic brain injury.



Our Services

- **Acquired Brain Injuries**
(traumatic, anoxic, aneurysms/bleeds, cerebral vascular accidents)
- **Spinal Cord Injuries**
(all levels, including Halo care)
- **Complex Wound Care**
(including Vac therapy)
- **Burn Care**
- **Pulmonary**
(including vent care and weaning, trach care, suctioning and decannulation)
- **Congenital Disorders**
(including anomalies, Cerebral Palsy and Spina Bifida)
- **Amputee Care**
- **Neuromuscular Disorders**
(including Guillain-Barré, Muscular Dystrophy and Myasthenia Gravis)
- **Medically Complex**
(including multiple trauma/fractures; multiple IV antibiotic therapy; isolation; and TPN, G - and J-tube feedings)
- **Orthopedically Complex**
(including multiple trauma/fractures, external fixator care, and non-weightbearing)
- **High-Intensity Rehabilitation**
(licensed physical, occupational and speech therapists; recreational therapy, neuropsychological services, social services and community integration)

I have never been so impressed with a facility in my entire life. CareMeridian staff is stellar and cares deeply about every patient. My son, admitted after a stroke, has had the best care and his recovery has been remarkable thanks to the CareMeridian team. His care and the care of others in the facility has exceeded my expectations.

Karen Mccauley, Mother, CareMeridian San Fernando Valley

Our Point of Difference

Unlike most post-acute care alternatives, CareMeridian provides a non-institutional-like environment, creating surroundings conducive to quicker recovery. Each facility features sophisticated equipment, outdoor therapeutic areas and personalized bedrooms to make our patients feel like they are at home.

CareMeridian has received accreditation by the Joint Commission on Accreditation of Healthcare Organizations (JCAHO) and has been recognized for meeting the Commission's healthcare quality and safety standards.

